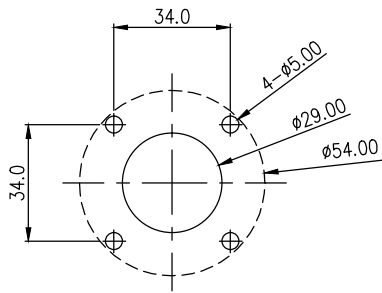


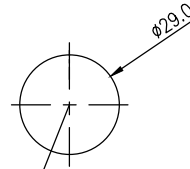
KLAUDIO

www.kludio.com

KD-ARM-MP10 / MP12 Tonearm Mounting Holes



Dimensions are in millimeters. The four 5mm flange screw holes are not required if mounting via stem nut. See User manual for details.



Spindle-to-Pivot Distance:
258mm for KD-ARM-MP10
298mm for KD-ARM-MP12

