

KLAUDIO™
www.klaudio.com

KLAUDIO™



KD-CLN-LP200
Ultrasonic Vinyl Record Cleaner
User's Manual

English v1.2

User Manuals are updated regularly. Please be sure to check our support page for a newer version of this guide: www.klaudio.com

GENERAL PRECAUTION

Please read this manual carefully before using your Klaudio product.

ABOUT SIGNS

Throughout this document, critical information is highlighted in gray-colored boxes. The following symbols are intended to help prevent any situation which may cause personal injury and/or damage to equipment:



WARNING: Indicates a potentially hazardous situation which, if not avoided, could result in personal injury or be life-threatening.



CAUTION: Indicates a potentially hazardous situation which, if not avoided, may result in damage to equipment or property.



PROHIBITED: Indicates a prohibited action.

TRADEMARKS

The Klaudio name and logo are trademarks or registered trademarks of Koolance, Inc. Other company and product names used in this publication are for identification purposes only and may be trademarks or registered trademarks of their respective companies.

COPYRIGHT

All rights reserved. Copyright (C) Klaudio.

CONTACT INFORMATION

Customer Support: tech@klaudio.com

Web: www.klaudio.com

Address: 2840 W Valley Hwy N, Auburn, WA 98001

Phone: +01 253-249-7813



CAUTION: Before powering-on the system, the “AC POWER SELECT” switch must be set for your local voltage. The incorrect setting can damage the product and is not covered by the product warranty.

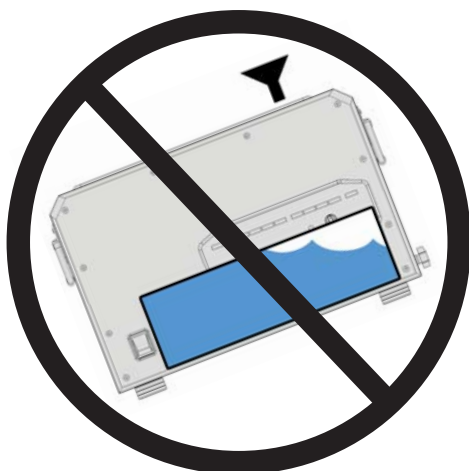


Included Hardware

- Rubber funnel
- PVC drain tubing
- User Manual
- AC Power Cable (U.S. plug)



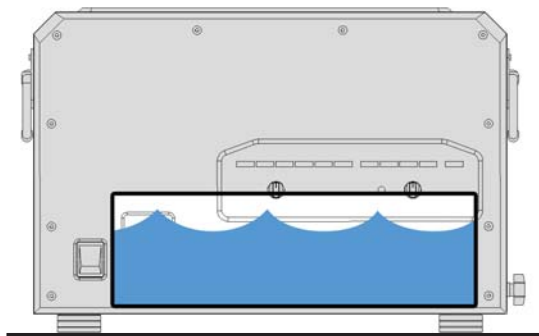
CAUTION: Keep this product level once water is added. If the product is tilted, water may spill onto and damage the electronics.



Do not tilt while filling!



Do not tilt while operating!



Keep unit level whenever water is inside. Always drain water from the reservoir completely before transporting.

Required Tools

During installation, you may need the following tools:



flat-head screw driver



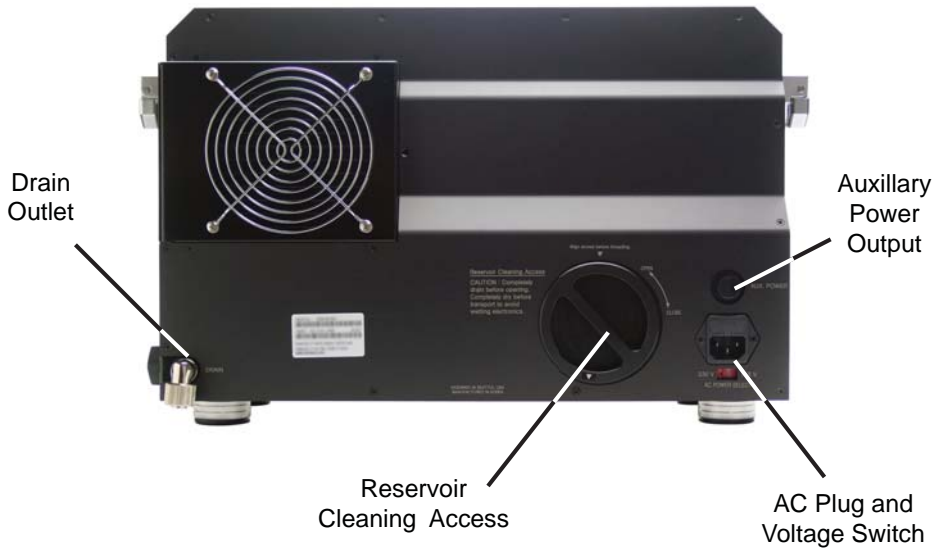
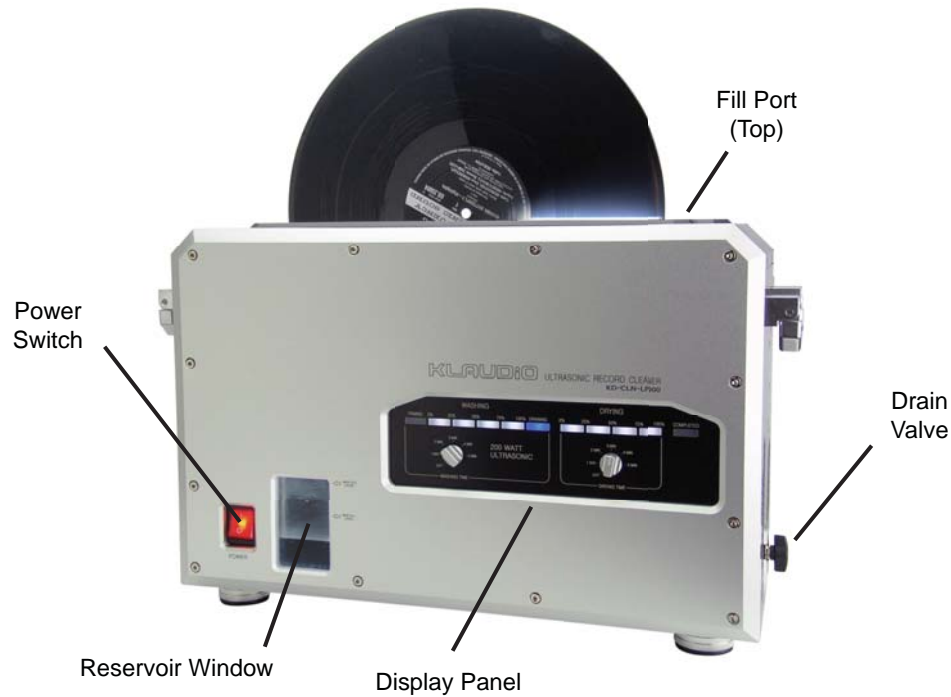
Table of Contents

Overview	1
Product Diagram	2
Features	3
Setup	4
Voltage Configuration	5
Filling the Reservoir	5
Connecting the Power Cable	6
Adjusting Washing and Drying Settings	6
Understanding the LED Progress Bar	7
Operation	8
Loading a Record	9
Draining and Maintenance	9
Accessing the Reservoir	11
Troubleshooting	12
Limited Warranty	13

Chapter 1

Overview

Product Diagram



Features

Enjoy your vinyl records as if they were new again! Klaudio's KD-CLN-LP200 brings an unrivaled 200 Watts of ultrasonic cleaning power to your LP collection. Using patent-pending technology, the toughest grime and dust is easily removed without the risk of physical scrubbers or need for detergent. Drying is also handled safely with blowers. Simply fill with plain water and insert your phonograph record-- the rest is automated.

Ultrasonic transducers are placed perpendicular to the disc for maximum cleaning effect. Klaudio's technology allows powerful waves to remove debris without damaging the disc, and special dampening minimizes vibration and noise. The entire washing and drying process can be adjusted from 2 to 10 minutes. Cleaning status is conveniently displayed through an LED progress bar.

- 200W total ultrasonic cleaning power
- Compatible with 296-304mm (11.65-12in) diameter LP vinyl records (Other disc sizes can be used with optional adapters.)
- Easy-to-use automated process which starts simply with record insertion
- Risk-free cleaning and drying without physical surface contact
- No scrubbing or drying rollers to replace
- Designed for use without detergent, fill with distilled water
- Adjustable washing time: 1-5 minutes
- Adjustable drying time: 1-5 minutes
- Wash + dry, wash-only, and dry-only modes
- Premium welded stainless steel reservoir for high reliability
- Integrated drain valve and reservoir access for easy maintenance
- Auxiliary power output for future accessories
- 115V (60Hz) and 230V (50Hz) AC compatible
- 2-year warranty

Chapter 2

Setup

Voltage Configuration

Before powering-on the system, the “AC Power Select” voltage switch must be set for your local voltage.



CAUTION: Before powering-on the system, the “AC POWER SELECT” switch must be set for your local voltage. The incorrect setting can damage the product and is not covered by the product warranty.



On the rear of the unit, use a small flat-head screwdriver to adjust the AC voltage switch (115V/60Hz or 230V/50Hz). The incorrect setting can permanently damage the ultrasonic transducers. This condition is not covered by the product warranty.

Filling the Reservoir

Use only distilled water to fill the reservoir. Detergents, tap water, and other additives are not recommended and may react with materials used in the system or cause mineral build-up.

Using a funnel (one is included), SLOWLY add water through the top fill port. The reservoir requires approximately 2.5 liters or 0.66 gallons of water.



Max Fill Level

Stop filling once the water level reaches the “Max Fill Level” marked on the reservoir. There will be a delay between pouring and an increase in the reservoir fill line. Go slowly to avoid overfilling.

Connecting the Power Cable

Once the reservoir is filled with water, connect the main AC power cable to the back of the unit. Plug the pronged end into an AC outlet.



Turn on the main front power switch. It will illuminate when switched on.

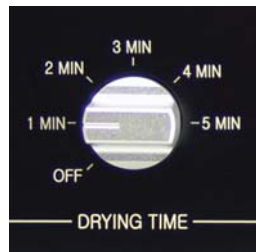
Adjusting Washing and Drying Settings

Configure the setting knobs as desired. This can be done at any time before or during the cleaning operation:



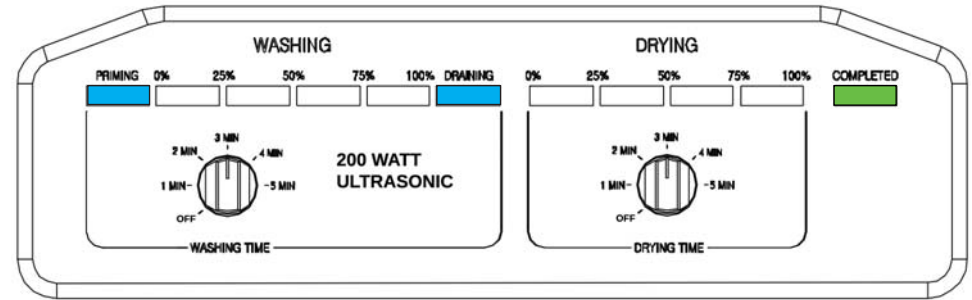
“WASHING TIME” adjusts the ultrasonic washing time from 1-5 minutes. Longer cleaning times are intended for especially difficult-to-clean records. It is suggested to start with a short time period and increase if needed. If only drying is desired, select “OFF”.

“DRYING TIME” adjusts the air blower drying time from 1-5 minutes. This setting depends on room temperature and humidity. If only washing is desired, select “OFF”.



Understanding the LED Progress Bar

The LED display bar will show the current status and cleaning progress.



Washing Cycle

PRIMING



The pump is filling the upper wash basin from the reservoir. If flashing red, this indicates the reservoir water level is too low.



Indicates the current washing progress based on the preset time.

DRAINING



The upper wash basin is emptying back into the reservoir.

Drying Cycle



Indicates the current drying progress based on the preset time.

COMPLETED



Once finished, the “Completed” green LED will illuminate. The system will also emit an audio chime. Remove the disc and insert another to restart the cleaning cycle.

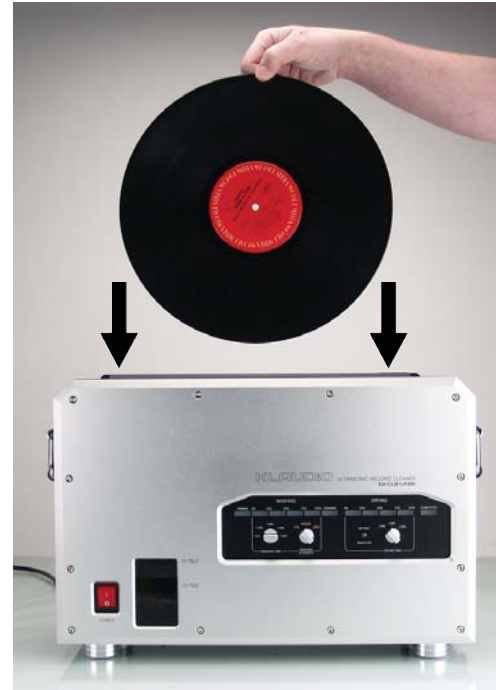
Chapter 3

Operation

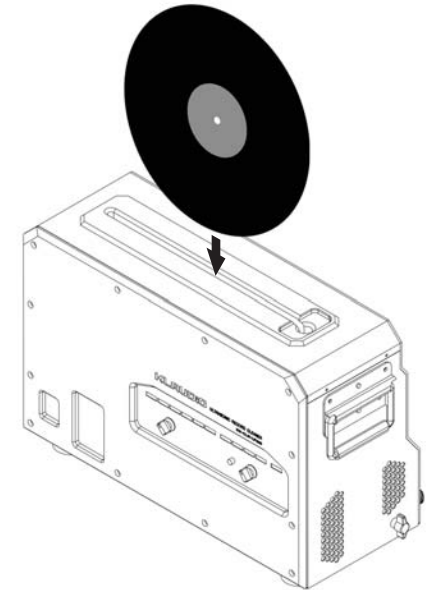
Loading a Record

After initial setup and configuration, there's only one step to operation. Carefully place an LP vinyl record with a diameter of between 296-304mm (11.65-12in) into the top loading slot. When loading, the disc should be kept vertical (perpendicular to the floor).

The cleaning/drying process will automatically start. Once finished, the "Completed" green LED will illuminate. Insert a new disc to start again.



To avoid scratches, keep disc perpendicular to the floor when inserting.

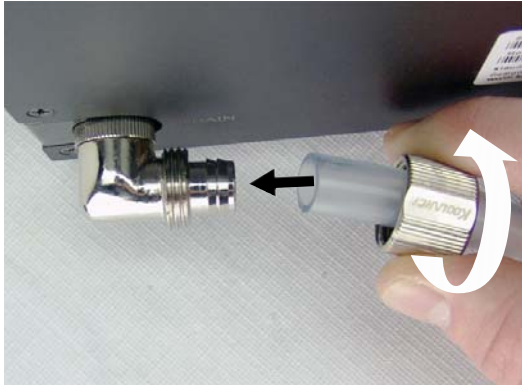


Draining and Maintenance

It's recommended to refresh the system with clean water periodically, about every 1-4 weeks, depending on usage.

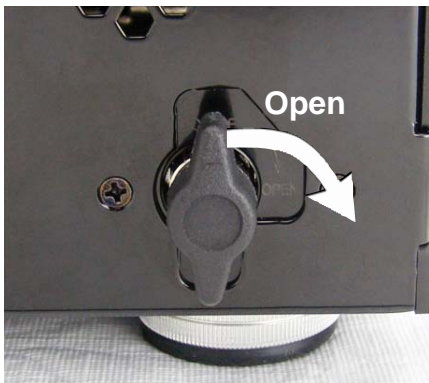
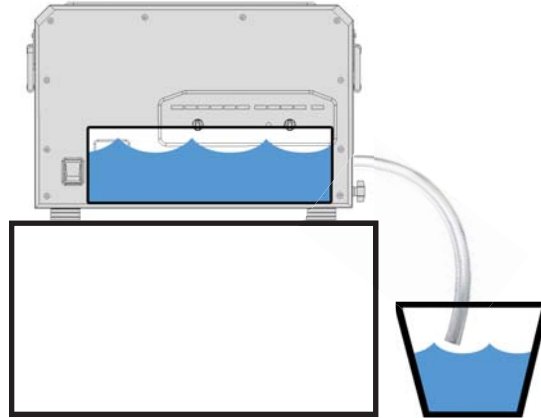
The unit should also be drained before being transported or sitting idle for long periods of time. **DISCONNECT THE AC POWER CABLE BEFORE DRAINING!**





To drain, push the included PVC tubing onto the barbed fitting marked "Drain" and screw on the knurled compression ring. Position the opposite end of this tubing into a sink or large container to capture the older water.

Draining is made easier by placing the cleaning unit on a table with the tubing lowered into a bucket.

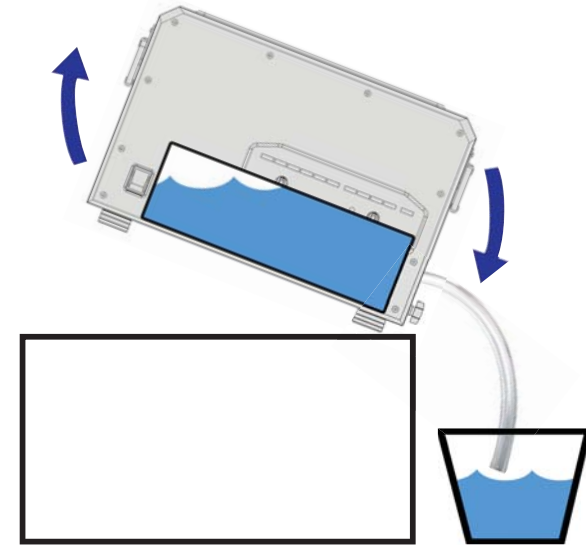


To release water from the reservoir, turn the drain valve knob on the side of the unit to "Open".

Accessing the Reservoir

If necessary, the reservoir can be accessed for cleaning or thorough drying. Before opening the reservoir, be sure it's completely empty.

See "Draining and Maintenance" which describes this process. While draining, gently tilt the system towards the drain fitting to fully evacuate water from the reservoir.



Once the reservoir is completely empty, unscrew the rear access cap. If the unit will be shipped or transported, paper towels can be placed inside the reservoir to absorb residual water (along with replacing the access cap).



Troubleshooting

1. The system does not power on, begin the cleaning cycle, or the LED progress bar flashes when a disc is inserted.

Check that the power cord is connected between the unit and an AC wall outlet. Confirm the voltage switch is properly set on the rear of the unit (See “Voltage Configuration”). Be sure the diameter of the LP record is between 296-304 millimeters (11.65-12.00 inches); other sizes will not be detected. Make sure the “Completed” green LED light is illuminated before inserting a record. If not, try power cycling the unit (turning off/on using the front power switch), then removing and reinserting the disc.

2. The priming LED light flashes red and an alarm sounds.

This indicates the reservoir water level is too low to start cleaning. Add more water to the reservoir before reinserting the disc, below the max fill line.

3. Water is dripping from the unit.

The cleaning system must remain level at all times when filled with water. Check that the drain valve is closed (See “Draining and Maintenance”) and that the reservoir access cap is tightened shut (see “Accessing the Reservoir”).

4. The unit makes a loud noise during the auto priming or draining process.

Unwanted debris may have entered the pump through the top loading slot. Completely drain and dry the unit (see “Draining & Maintenance”). Check inside the reservoir via the rear access cap. Significant debris or any hard particles should be removed before operation. Add new water after cleaning out the reservoir (see “Filling the Reservoir”).

5. The unit makes odd noises during the washing cycle (0-100%).

The ultrasonic transducers will produce a moderate squeeling or grinding noise when cleaning, which is normal. The record is also rotated with a belt motor during this process. If a more significant noise is heard, try turning off the unit and placing it onto a different surface. Although the transducers are insulated, vibrations might be exaggerated by some table surfaces.

6. The record does not rotate properly during the cleaning or drying cycle.

This can occur if there are significant irregularities or “flat spots” in the outer edge of the disc. It may help to lightly smooth the outer edge of the vinyl with sandpaper. If sanding, rinse the disc to remove vinyl debris before inserting it into the cleaning unit.

Limited Warranty

Klaudio (“Klaudio”) warrants each new ultrasonic cleaning product against defects in materials or workmanship for a period of two years from the date of purchase, and agrees to repair or replace any defective Klaudio system without charge. Shipping costs are non-refundable.

This warranty is non-transferable. All warranty claims must be accompanied by the original proof of purchase.

THIS WARRANTY DOES NOT COVER DAMAGE RESULTING FROM ACCIDENT, MISUSE OR ABUSE, LACK OF REASONABLE CARE, SHIPPING DAMAGE, MODIFICATIONS, THE AFFIXING OF ANY ATTACHMENT NOT PROVIDED WITH THE PRODUCT, OR LOSS OF PARTS .

Use of chemical cleaning agents or liquids will void this warranty. Klaudio will not pay for warranty service performed by a non-authorized repair or diagnostic service and will not reimburse the consumer for damage resulting from warranty service performed by a non-authorized repair service. No responsibility is assumed for any special incidental or consequential damages due to a defective Klaudio product.

In order to obtain warranty service, contact our RMA department for information. The product must be shipped postage prepaid to an authorized Klaudio service location. It is suggested that, for your protection, you return shipments of product by insured mail, insurance prepaid. Damage occurring during shipment is not covered by this warranty. Shipping costs are non-refundable. No other warranty, written or oral, is authorized by Klaudio.

Disclaimer

IN NO EVENT SHALL KLAUDIO, PARENT COMPANY KOOLANCE, OR ITS EMPLOYEES, AGENTS, SUPPLIERS, MANUFACTURERS, OR CONTRACTORS BE LIABLE FOR ANY DAMAGES OF ANY KIND OR CHARACTER, INCLUDING WITHOUT LIMITATION ANY COMPENSATORY, INCIDENTAL, DIRECT, INDIRECT, SPECIAL, PUNITIVE, OR CONSEQUENTIAL DAMAGES, LOSS OF USE, LOSS OF DATA, LOSS OF INCOME OR PROFIT, LOSS OF OR DAMAGE TO PERSONS OR PROPERTY, CLAIMS OF THIRD PARTIES, OR OTHER LOSSES OF ANY KIND OR CHARACTER, AND WHETHER OR NOT THE POSSIBILITY OF SUCH LOSS OR DAMAGE HAS BEEN NOTIFIED TO KLAUDIO.

This page has been intentionally left blank.